

Perspectives from 40 years in the European Union



Uachtaránacht na hÉireann ar
Chomhairle an Aontais Eorpaigh
Irish Presidency of the Council
of the European Union
eu2013.ie



Uachtaránacht na hÉireann ar
Chomhairle an Aontais Eorpaigh

Irish Presidency of the Council
of the European Union

eu2013.ie

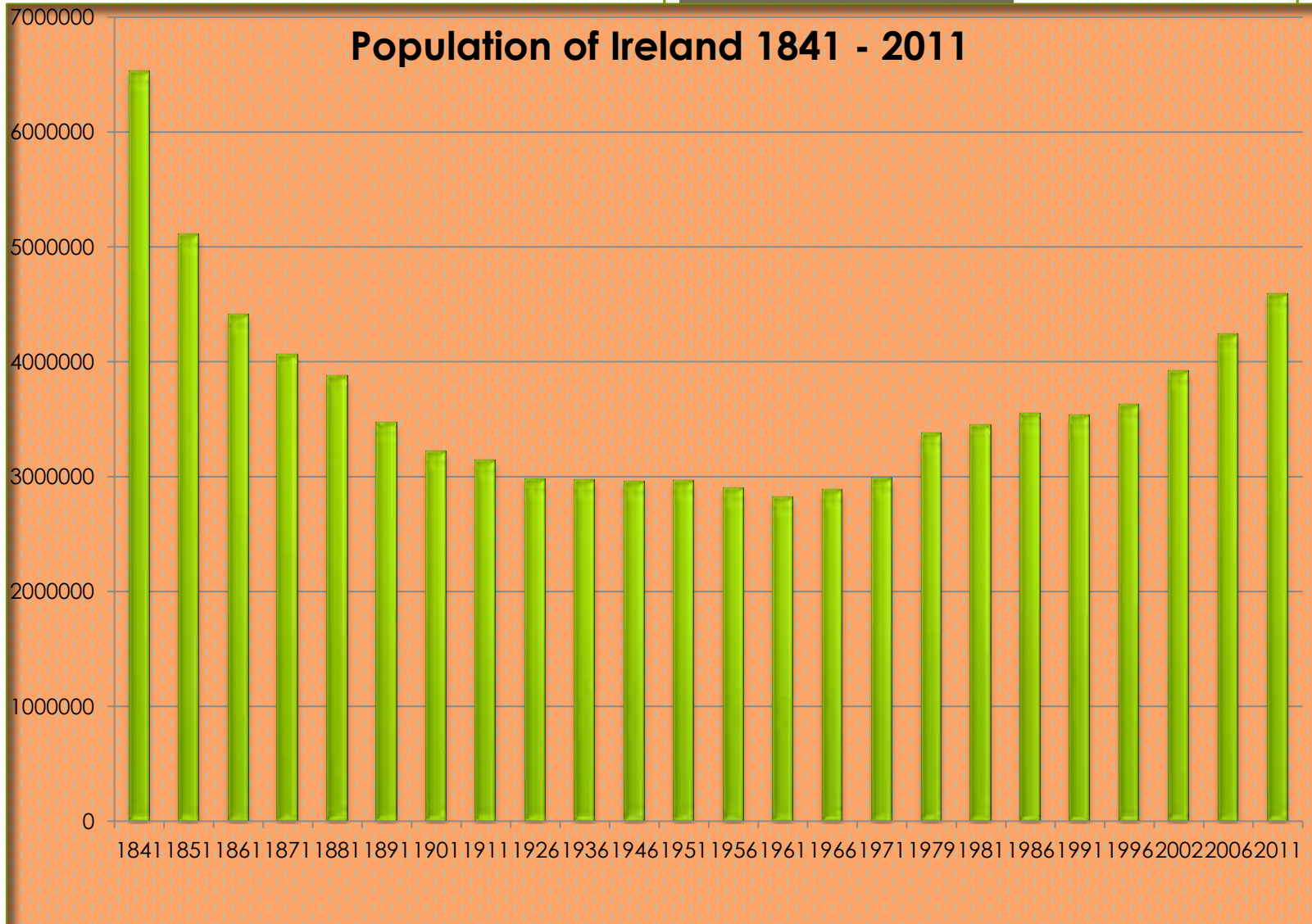
History

- Foundation of the Irish State – 1921
- Protectionism
- World War II - neutrality
- 1950's - economic stagnation

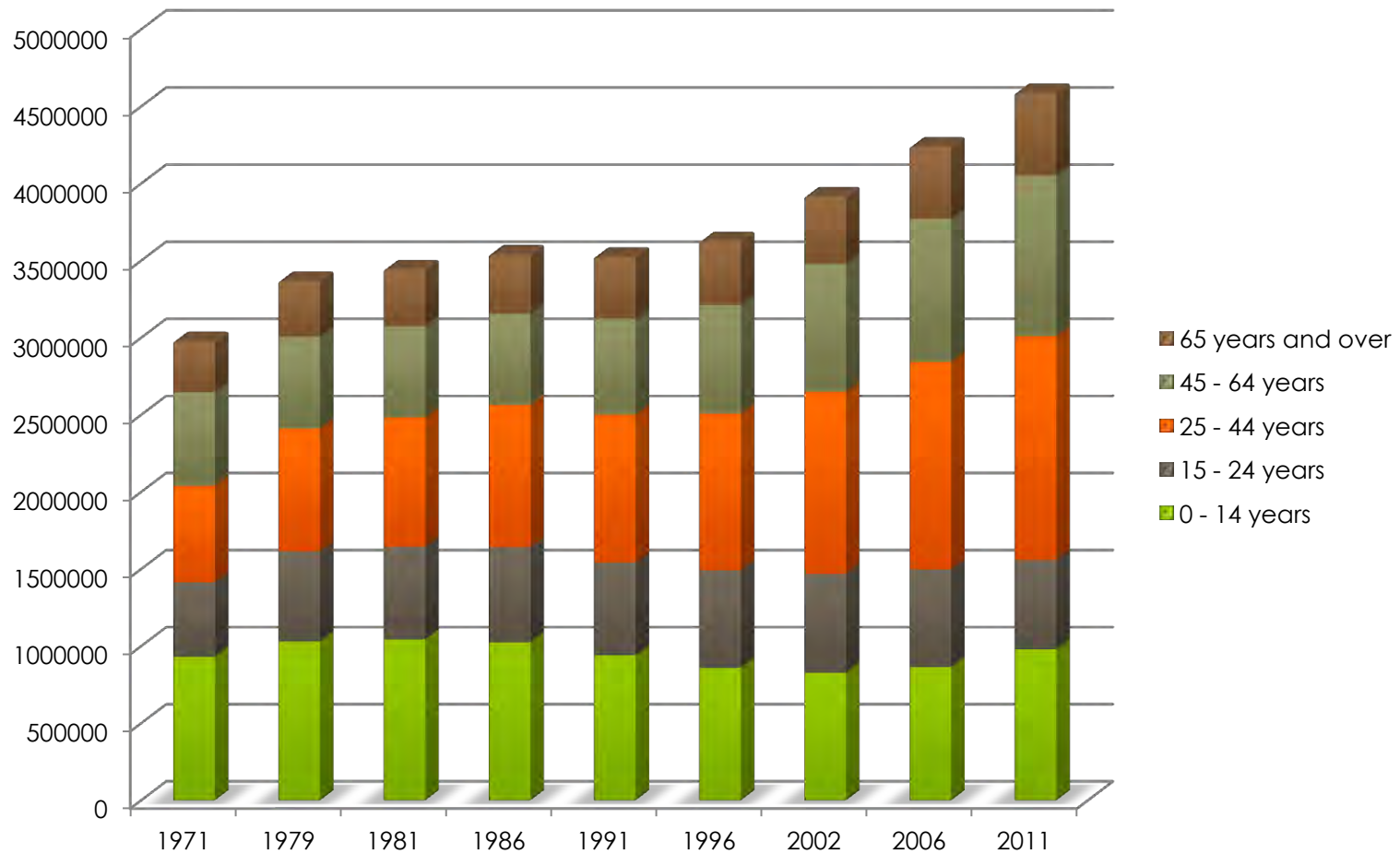
The Path to Membership

- Ireland's first application – June 1961
- De Gaulle's "Non" repeated – 1962 and 1967
- Treaty of Accession signed - January
- Accession (with UK and Denmark) -



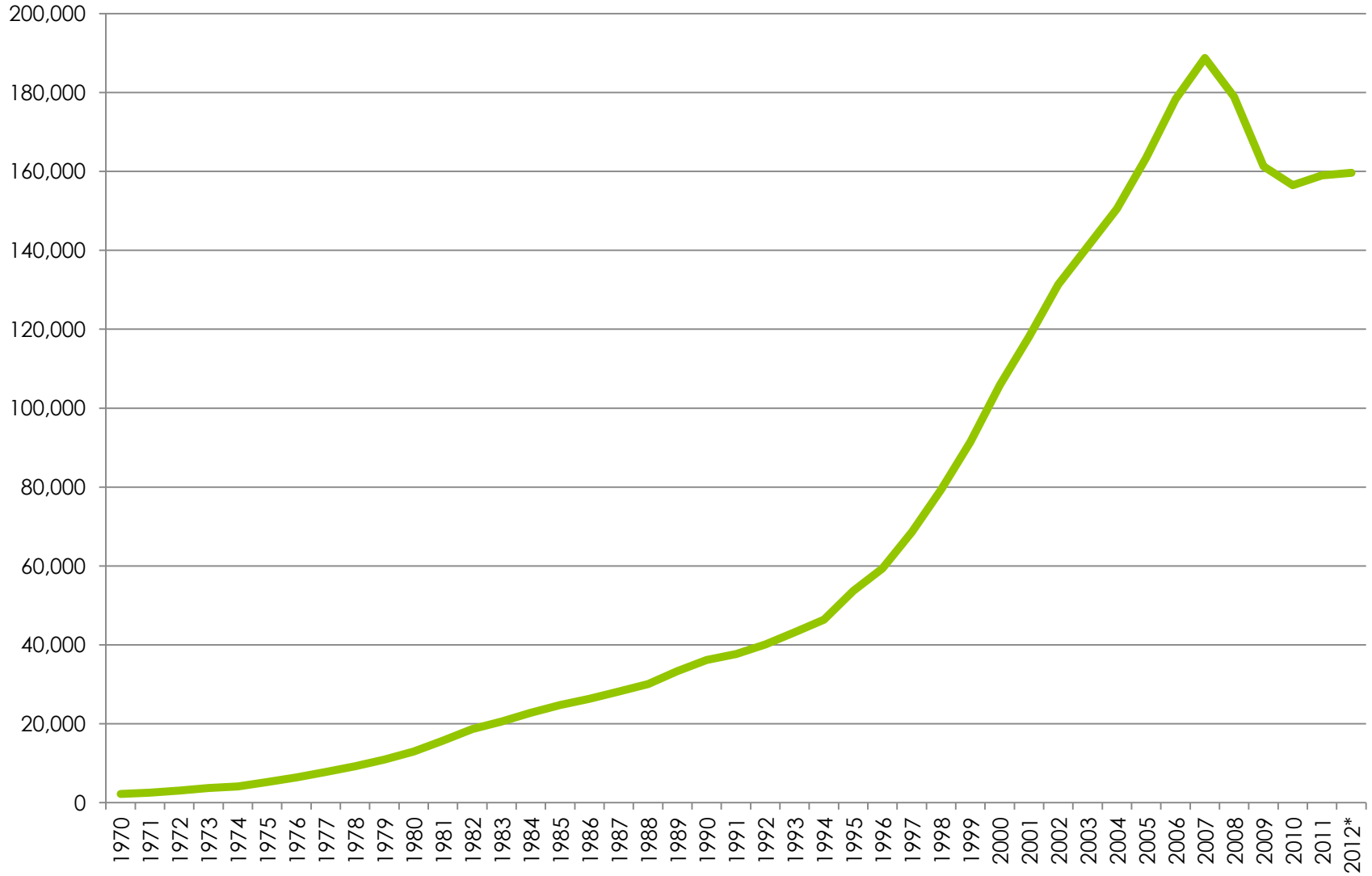


Population by Age Group 1971 - 2011

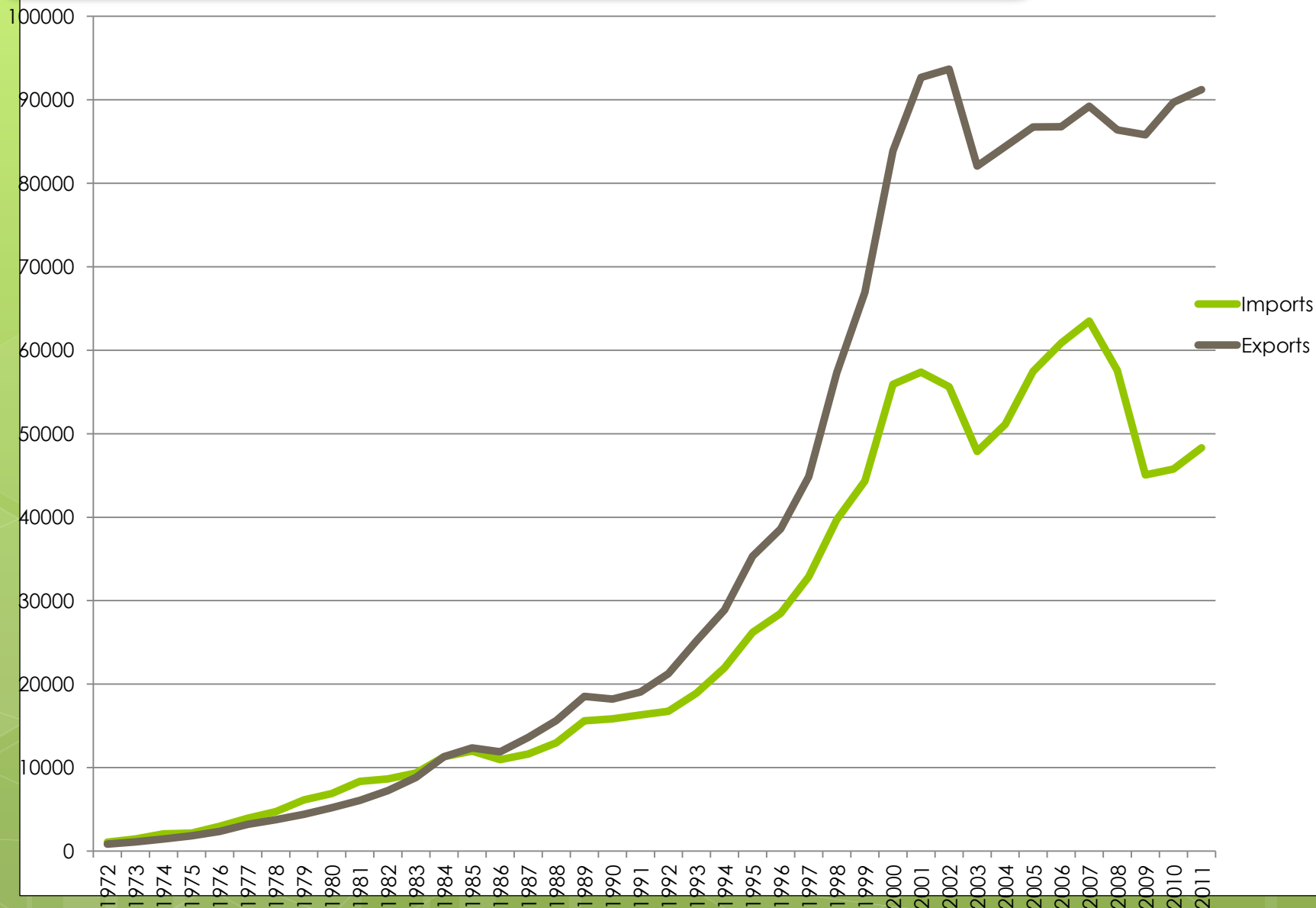


GDP 1970 – 2012

(current market prices)



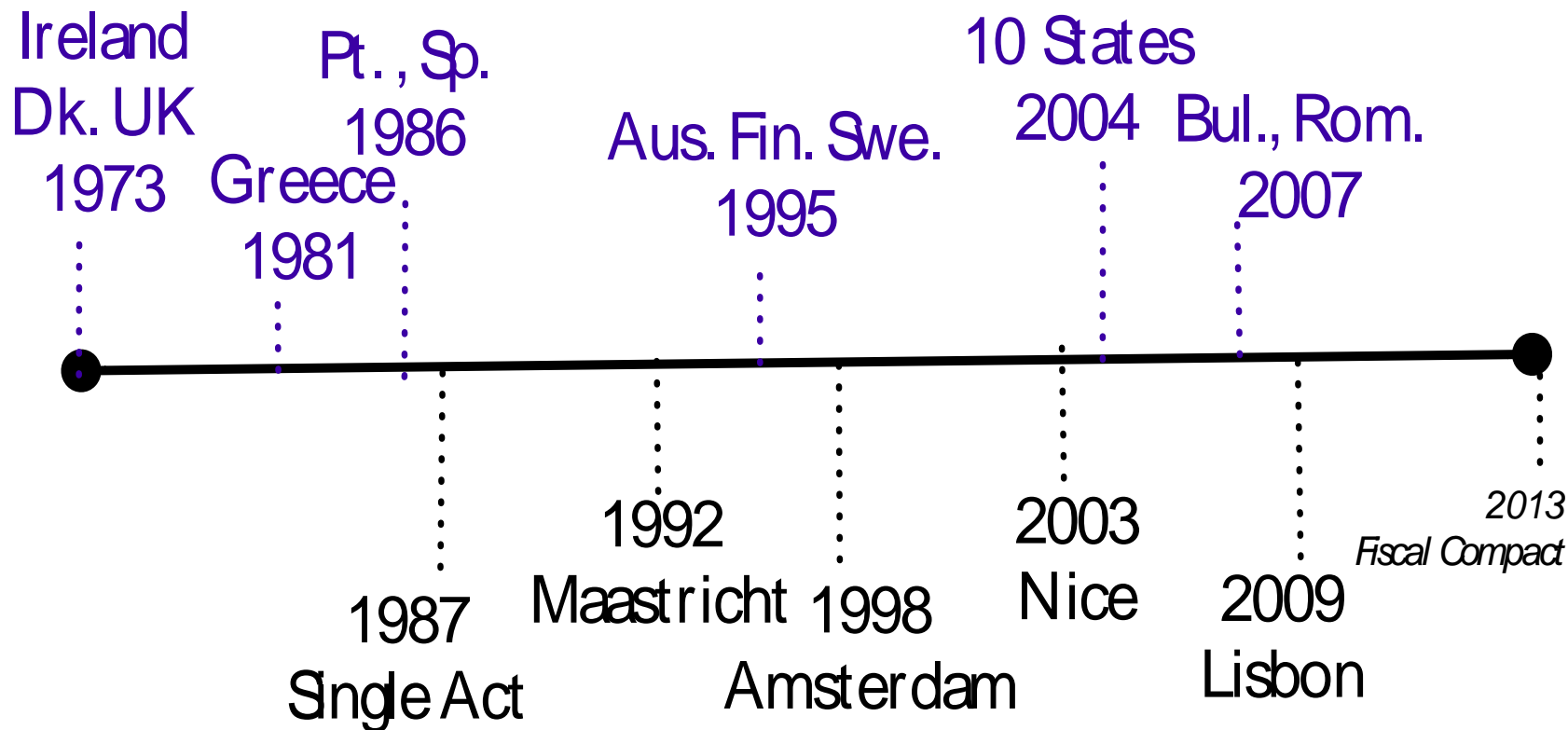
Exports and Imports 1972 - 2011



4 Main Themes

- Governance and Institutions
- Economic development
- Foreign Policy
- Society

Widening - Deepening



Treaties and Referendums

- Accession (1972) - 83% Yes
- Single European Act (1987) – 70% Yes
- Maastricht (1992) – 69% Yes
- Amsterdam (1998) 61% Yes
- Nice I, (2001) 54% No
- Nice II, (2002) 63% Yes
- Lisbon I (2008) 53% No
- Lisbon II (2009) 67% Yes
- Fiscal Stability (2012) 60% Yes

Guarantees and Assurances on Lisbon Treaty

- One Commissioner per Member State
- Taxation
- The right to life, education and the family
- Ireland's traditional policy of military neutrality
- Solemn Declaration:
 - social progress,
 - the protection of workers' rights,
 - the provision of public services, including non-economic services of general interest.

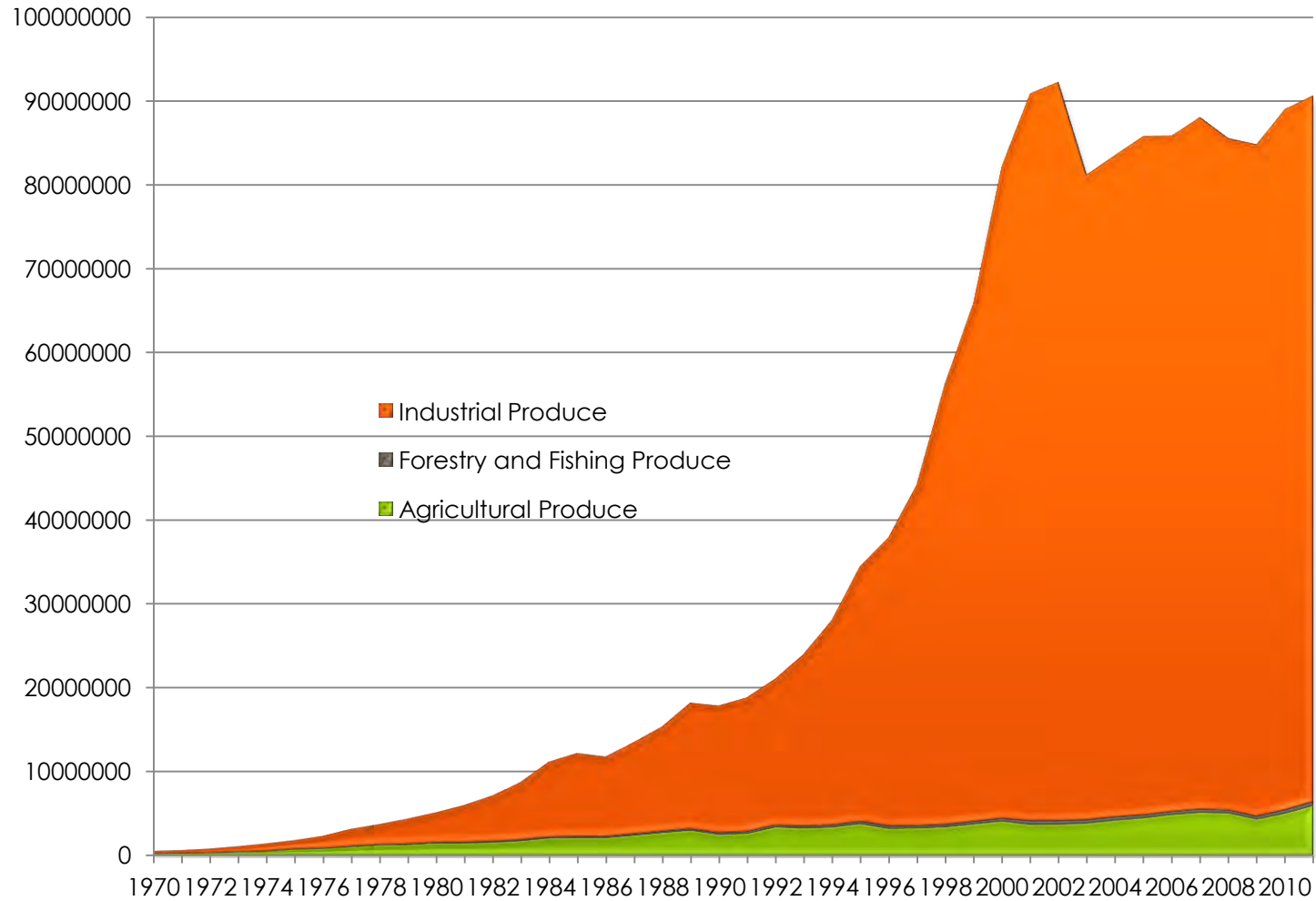
EU SECURITY AND DEFENCE POLICY

- *“The Treaty of Lisbon does not affect or prejudice Ireland's traditional policy of military neutrality.”*
- *“Any decision to move to a common defence will require a unanimous decision of the European Council.”*
- ESDP crisis management and peace support operations
- Ireland plays its part in the range of ESDP Operations

Economic

- Protectionism, Agricultural
- Replacement of protected industries
- Large gain in agricultural prices, exports
- Attraction of FDI

Composition of Exports



Social Change

- Role of Women
 - Equal Pay
 - Participation in the work force
 - Divorce, contraception and family structures
- Youth
 - Highest proportion under 15
 - Almost 30% unemployment

Conclusion







Thank You

Perspectives from 40 years in the European Union

Ευχαριστώ
πολύ.



Uachtaránacht na hÉireann ar
Chomhairle an Aontais Eorpaigh
Irish Presidency of the Council
of the European Union
eu2013.ie